

b e n t e c

Tracheostoma Vent



- Soft and flexible.
- Product is designed to minimize mucosa and stoma opening scarring, reduces the risk of tracheal wall perforations, and provides more comfort in extreme neck positions than rigid tubes.
- Elastomeric construction allows the enlargement of stoma breathing areas by progressing from the smallest size stoma button to larger size units.
- May be cleaned with normal boiling procedures and will withstand repeated autoclaving if desired.
- Patented design eliminates need for neck strap.
- Provides snug fit for patient security.
- Pliable medical grade silicone provides increased patient comfort.



To order, call 800•767•9175
Visa/Mastercard/Procurement Cards Accepted

1380 E. Beamer St.
Woodland, CA 95776

Fax: 888-828-8869
Internet: www.bentecmed.com

Tracheostoma Vent

The following procedure is provided by Dr. James T. Helpser*:

Introduction of Tracheostoma Vent

Insert the smaller proximal end into the stoma opening and allow the funnel-shaped distal end to protrude from the stoma. The tube is placed by folding the flexible construction slightly and allowing it to spring open within the trachea. Although the material has a soft, rubber-like consistency, it is more than adequate to maintain the open stoma. The tube is held in place by a ledge on the proximal end and a funnel on the

distal side. There is no need to wear any type of tie. If the stoma opening increases following the use of a specific size button, the next larger size may be subsequently used. These tubes have been used in several patients who have had an Asai Procedure, and they have been effective in maintaining a stoma without it affecting their speech.

*Dr. James T. Helpser, Pasadena Tumor Institute, 635 East Union Street, Pasadena, CA 91101

Helsper Tracheostoma Vents

| Product Code | Size | Dimensions (mm) | | |
|--------------|------|-----------------|-------|------|
| | | A | B | C |
| 530-7005 | 5 | 9.2 | 6.2 | 14.5 |
| 530-7006 | 6 | 9.5 | 8.0 | 15.2 |
| 530-7007 | 7 | 10.57 | 8.28 | 16.5 |
| 530-7008 | 8 | 11.94 | 9.4 | 17.8 |
| 530-7009 | 9 | 13.46 | 10.67 | 19.1 |
| 530-7010 | 10 | 14.99 | 11.94 | 20.3 |
| 530-7012 | 12 | 17.02 | 13.46 | 20.3 |

Short Helsper Stoma Vents*

| | | | | |
|------------|----------|------|------|------|
| GS79027-03 | 8 short | 11.9 | 9.4 | 12.0 |
| GS79027-13 | 9 short | 13.5 | 10.7 | 12.0 |
| GS79027-24 | 10 short | 15.0 | 11.9 | 13.0 |
| GS79027-34 | 12 short | 17.0 | 13.5 | 13.0 |

Long Helsper Stoma Vents*

| | | | | |
|------------|---------|------|------|------|
| GS83033-01 | 8 long | 11.9 | 9.4 | 27.0 |
| GS83033-11 | 9 long | 13.5 | 10.7 | 27.0 |
| GS83033-21 | 10 long | 15.0 | 11.9 | 27.0 |
| GS83033-31 | 12 long | 17.0 | 13.5 | 27.0 |

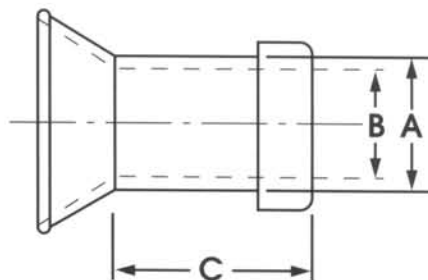
Short Slanted Helsper Stoma Vents*

| | | | | | |
|------------|----------------|------|------|------|------|
| GS81037-01 | 8 short/slant | 11.9 | 9.4 | 18.0 | |
| GS81037-02 | 9 short/slant | 13.5 | 10.7 | 19.0 | Long |
| GS81037-03 | 10 short/slant | 15.0 | 11.9 | 20.5 | Side |
| GS81037-04 | 12 short/slant | 17.0 | 13.5 | 20.5 | |

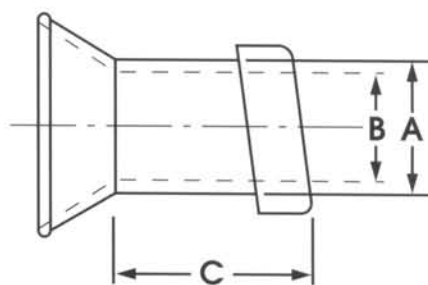
Long Slanted Helsper Stoma Vents*

| | | | | | |
|------------|---------------|------|------|------|------|
| GS81037-06 | 8 long/slant | 11.9 | 9.4 | 23.0 | |
| GS81037-07 | 9 long/slant | 13.5 | 10.7 | 24.0 | Long |
| GS81037-08 | 10 long/slant | 15.0 | 11.9 | 26.0 | Side |
| GS81037-09 | 12 long/slant | 17.0 | 13.5 | 31.0 | |

Standard Tracheostoma Vents



Special Tracheostoma Vents



*Special sizes.

All Bentec products are latex-free

To order, call 800•767•9175

Visa/Mastercard/Procurement Cards Accepted • Special Orders Available

Caution: Federal (USA) law restricts these devices to sale or on the order of a physician. All Bentec Medical, Inc. products are manufactured in the U.S. by Bentec Medical, Inc. in compliance with strict GMP Guidelines.

1380 E. Beamer St.
Woodland, CA 95776
Fax: 888-828-8869

Internet: www.bentecmed.com
E-mail: bentec@bentecmed.com